



the new generation  
of control panels!

# EPIC 1D

RANGE 0,37 ÷ 15 kW

- ▶ DIRECT ON LINE ELECTRONIC CONTROL PANEL FOR 1 SINGLE OR THREE PHASE PUMP
- ▶ SELF LEARNING OF THE PUMP DATA
- ▶ ONE PANEL FOR ALL APPLICATIONS
- ▶ COMPACT BOX
- ▶ EASY TO INSTALL
- ▶ LOCKABLE FLAP



## MAIN FEATURES

- Same control panel for potable, waste and industrial water applications
- Works with float switches, pressure switches and probes
- Self-learning of the pump data
- Duty-stand by logic
- BMS (building management system input)
- Switch on and Switch off delay
- Min and max amperage reading/protection and alarm
- Min and max Voltage reading/protection and alarm
- Phase failure protection and alarm
- Dry running protection made by: Cos fi and minimum amperage reading/protection and alarm
- Min and max water level alarm
- Motor's Klixon input and alarm
- Water in oil chamber protection and alarm

## HIGHLIGHTS

- Set all the parameters with the pushing button and read the data on the display
- The control panel works also with the 4-20 mA input (control the pump with a pressure transducer or a level sensor)
- Advance functions are:
  - Motor auto test
  - Scheduled maintenance option
- Further operations programs are:
  - Multitank -2 pumps works independently in 2 separates tanks
  - TIMER start and stop the pumps at a predetermined time
- GPRS REMOTE CONTROL SYSTEM – set and control your pumps with a remote control software (available soon)
- WIFI control system

## FEATURES

- Power supply input 1 ~ 50/60Hz 230V±10% (SINGLE 230)
- Power supply input 3 ~ 50/60Hz 400V±10% (TRIPLE 400)
- AUTO-0-MAN mode selection buttons (manual spring return)
- "Automatic motor running" green indicator light
- "Power on" blu indicator light
- Safety device reset button (0)
- Auxiliary circuit protection fuses
- Main disconnect switch with door lock
- Provision for start-up capacitors (single phase versions)
- ABS plastic box
- Tear-proof cable clamp output (only for ABS enclosures)
- IP55 protection rating (IP 65 available on request)
- Ambient temperature: -5/+40 °C
- Relative humidity 50% at 40 °C (condensate free)

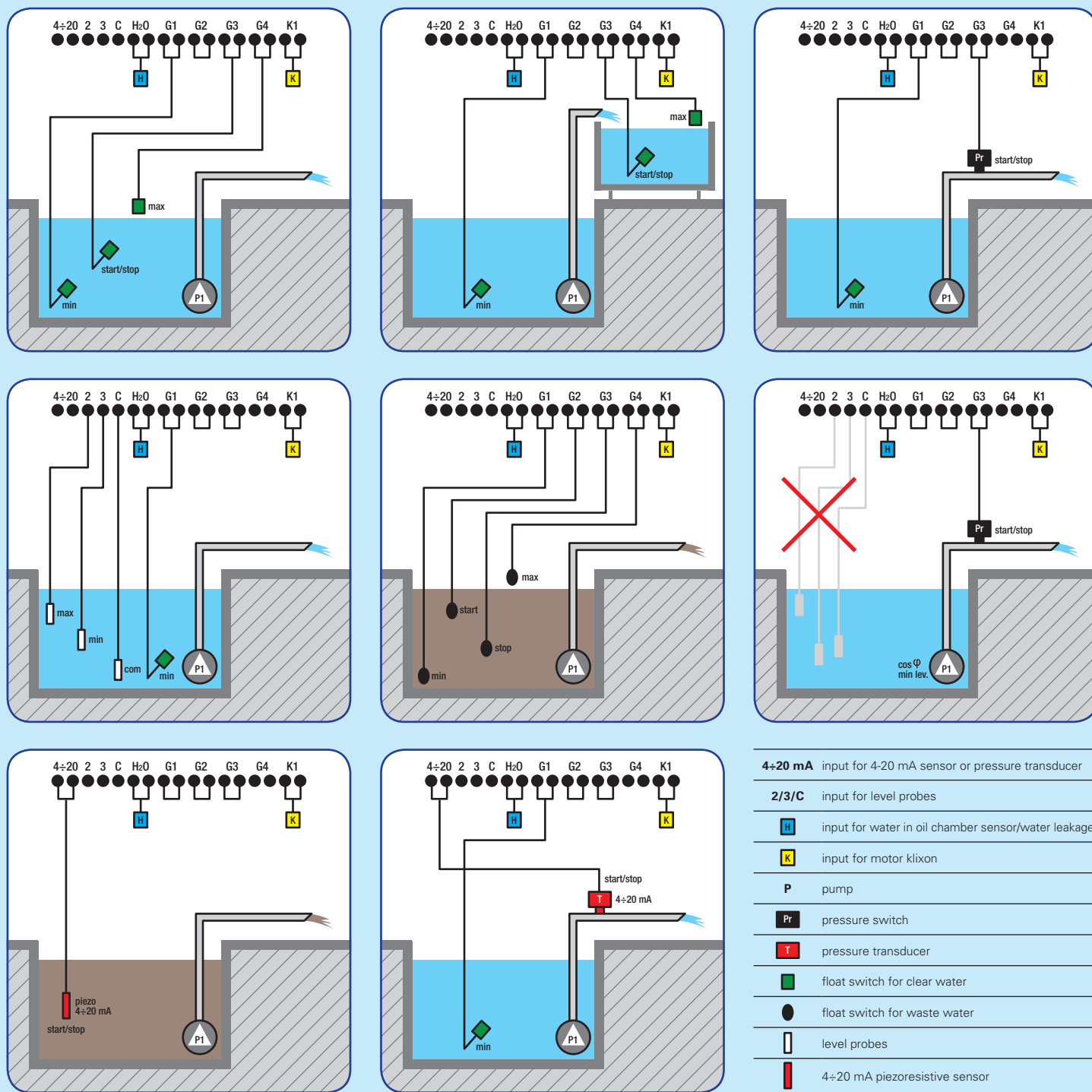
## OUTPUT

- Acoustic alarm
- Light alarm
- Free contact alarm output
- 12 V alarm output
- 230 V alarm output
- GSM kit
- GSM kit + battery back up



MADE IN ITALY

## TYPICAL INSTALLATION



## MODELS

CODE	MODEL	KW	HP	A	KG
101+D	EPIC 1-230 D	0,37÷2,2	0,5÷3	2÷16	3
102+D	EPIC 1-400/10 D	0,55÷7,5	0,75÷10	2÷15	6
103+D	EPIC 1-400/15 D	7,5÷11	10÷15	16÷24	6
104+D	EPIC 1-400/20 D	7,5÷15	10÷20	16÷30	6

The control panel is also available with start delta and statoric impedance starting from 1 to 300 KW